



santtomàs

REPORT 2023

[santtomàs.cat](http://santtomàs.cat)



# GREETINGS FROM THE PRESIDENT

This report is a good time to reflect on the milestones we have surpassed as an organisation, and the challenges we have set ourselves. I believe 2023 was a time about which we can be extremely satisfied when we take stock of the year. Despite not having the public funds necessary to put an end to our waiting lists, and in the absence of a magic wand to enable the social and employment integration of everyone with intellectual disabilities, in the year that is coming to an end we opened the home in Calldetenes more than three years after its completion but without having the economic agreement in place, we opened a Workshop Store in Carrer de la Riera in Vic, the training Cafeteria to give new employment opportunities to people with intellectual disabilities, and we approved the institution's Strategic Plan.

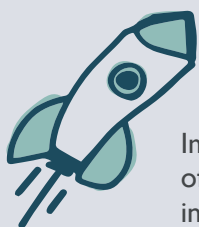
At the end of 2022, we set out to expand the opportunities we offer people associated with the institution in terms of employment and social integration, to raise awareness in society about these people's capabilities, to work to achieve a fairer and more inclusive society, and to establish the institution's long-term goals. I believe that in view of the results we have achieved, we can all take a great deal of satisfaction as regards the work done. The twelve people who live in the home in Calldetenes have seen how their quality of life has greatly improved, we are creating and teaching social handicrafts and selling the organisation's products in the Workshop Store, and every day we are amazed by the cafeteria workers' ability to serve us dishes of the highest quality.



But the list of challenges is a long one, and at Sant Tomàs we will never come to the end. There is still a long way to go before we can say we live in a fairer and more equal society, but we are happy to say that we have begun this year with some good news, despite the fact that it has been a very long time coming. The amendment to article 49 of the Spanish Constitution, removing the term "handicapped" and replacing it with "persons with disabilities", as set out in the Convention on the Rights of Persons with Disabilities, has finally been passed.

Steps like this one constitute progress towards an improvement in the quality of life of people with intellectual disabilities, which is the mission of Sant Tomàs - no more, no less.

My very best wishes  
**Joan Casany Viñeta**



## MISSION

Improve the quality of life of people with intellectual disabilities or with developmental difficulties, and that of their families.



## VISION

Be a person-centred, community-led and networked organisation to provide high-quality support, promoting the empowerment of people and sustainable development using the tools and spirit of the social and solidarity economy. Territorial coverage: Osona and Lluçanès regions.

# BOARD OF DIRECTORS AND BOARD OF TRUSTEES

Sant Tomàs Association ● Sant Tomàs Foundation ● Tac Osona Foundation ●

Mr. Joan Casany i Viñeta ●●●

**President** (CEDO - Osona Business Council)

Ms. M.Carme Bover i Franquesa ●●●

**1st Vice-President** (Riudeperes Centre)

Mr. Marc Verdaguer i Montanyà ●●●

**2nd Vice-President** (Calldetenes Town Council)

Ms. Àngels Vila i Sala ●●●

**Secretary** (Vic Bar Association)

Mr. Marc Mussons i Torras ●●●

**Treasurer** (University of Vic - Central University of Catalonia)

Mr. Joan Moreno i Parés ●●

**Member** (CDIAP Tris Tras and CDI Espai Viu)

Mr. Jordi Sala i Pastallé ●●

**Member** (Estel Special Education School)

Mr. Joan Codinachs i Alonso ●●

**Member** (Sant Tomàs Occupational Centre)

Mr. Ramon Casasas i Riba ●●

**Member** (Clarella housing service)

Ms. Dolors Ramon i Rovira ●●

**Member** (Club CAR leisure and sports service and Respir Respite Service)

Mr. Xavier Casellas i Camps ●●

**Member** (Eina training and employment centre)

Ms. Carme Guinovart i Garriga ●●●

**Member** (Tac Osona Special Work Centre)

Ms. Marta Moreta i Rovira ●●

**Member** (Manlleu Municipal Council)

Ms. Núria Montanyà i Tanyà ●●

**Member** (Torelló Municipal Council)

Ms. Núria Homs i Molist ●●

**Member** (Vic City Council)

Ms. Sara Vidal i Aguiló ●●

**Member** (La Fageda)

Ms. Mercè Generó i Prat ●●

**Member** (Osonament)

Mr. Antoni Molas i Casas ●●

**Member** (Hospital Consortium of Vic)

Mr. Gerard Sancho i Vilalta ●●

**Member** (Osona Regional Council)

Mr. Pere Girbau i Pous ●

**Member** (Civil Society)

Mr. Evarist Puigvila i Prat ●

**Member** (Calandra)

Mr. Josep Ramon Delgado i Berdala ●

**Member** (Calandra)

Ms. Maria Carme Barcons i Matavera ●

**Member** (Calandra)



## VALUES

Sant Tomàs always focuses on the individual, as a means of acknowledging their dignity. Human dignity is the foundation on which the values that guide our actions and decisions are built.

- Commitment
- Equity
- Integrity
- Responsibility
- Sustainability
- Transparency and communication

# SDG COMMITMENTS

Sant Tomàs has included the 17 Sustainable Development Goals (ODS) in the 2030 Agenda for sustainable development in its mission and its actions.

Seven of the 17 SDGs are fully aligned with the institution's mission and areas of action. Some of the actions that have been undertaken to fulfil the SDGs are as follows:

## SDG 3. Ensure a healthy life and promote well-being for all people at all ages.

*People's health and well-being plan:*

- \* Psychosocial studies in all the organisation's services.
- \* Inauguration of the Caldetenes home.\* Organisation of the second edition of the padel tennis tournament.

## SDG 4. Ensure inclusive and equitable quality education and promote lifelong learning opportunities for all.

*Inclusive education plan and continuing education:*

- \* Consolidation of the Specific Training Pathway (STP).
- \* Provision of the digital competencies course to improve employment integration.\* Consolidation of dual training as a training model.

## SDG 8. Ensure decent jobs and economic opportunities for all.

*Opportunities and professional development plan:*

- \* Opening of the Sant Tomàs Cafeteria.\* New road cleaning and junk collection services.\* Incorporation of collaborative robots in the Special Work Centre.
- \* Vending machine serving prepared dishes at the La Cuina de Sant Tomàs kitchen.\* Inauguration of the Sant Tomàs Workshop Store.

## SDG 10. Guarantee equal opportunities.

*People's health and well-being plan:*

- \* Training in emotional relationships and sexuality for professionals.\* Drafting and presentation of the Sant Tomàs and Tac Osona Equality Plan.\* Creation of the Cognitive Accessibility Committee.

## SDG 12. Ensure sustainable consumption and production patterns.

*Sustainable economy plan:*

- \* Improved monitoring and management of energy supplies.\* Photovoltaic solar self-consumption installations in all the institution's centres.\* LED lighting in most of the organisation's centres.\* Increase in the number of charging points for electric vehicles.
- \* Provision of the cleaning and maintenance service for photovoltaic solar installations.\* Beginning of the process to reduce water consumption in the Calandra laundry by 30%.\* Launch of the Vitamina D services Energy Cooperative.



## SDG 16. Guarantee good governance and transparency.

*Governance and transparency plan:*

- \* Preparation and approval of the 2023-2026 Strategic Plan.\* Approval of amendments to the statutes and internal regulations of the Sant Tomàs Association.
- \* Institutional corporate compliance audit and action plan.\* Woman with Confidence hallmark accreditation from the Lealtad Foundation.

## SDG 17. Guarantee alliances with institutions and organisations in our area to share knowledge and take advantage of synergies.

*Partnerships plan with the local area:*

- \* Collaboration with the IESE business school in the drafting of the Sant Tomàs Strategic Plan.\* Attendance at the Fundació Esment conference in Majorca on innovation in the management of social institutions.
- \* Work with the Sant Pere de Torelló Town Council for opening a residential home.\* Production of the musical The Flight of the Little Prince.\* Survey of satisfaction for Sant Tomàs families.

### KEY FIGURES:

● 2022 ● 2023

77 | 78

Areas of action

237 | 286

Actions carried out

72 | 72

Challenges to undertake

82% | 86%

Achievements

# SANT TOMÀS

## SOCIAL AND EDUCATIONAL AREA

**Sant Tomàs Association:** Established in 1967 by a group of seven families with disabled children, members of civil society and representatives of Osona municipal councils. Its role is to foster leisure and life within the association, entertainment, participatory and social activities, and broad-based initiatives for relations between families.

**Sant Tomàs Foundation:** Created by the Sant Tomàs Association in 2016, the Foundation provides welfare and education services for the people cared for and their families. This care and support is provided throughout the lives of the people with learning disabilities and developmental difficulties.

## ORGANISATIONS OF WHICH WE ARE MEMBERS

\* Catalan Supported Employment Association (ACTAS) \* Coordinator of Centres for people with learning disabilities in Catalonia (CCPC) \* Catalan Sports Federation for people with learning disabilities (ACE) \* Special Education Research Group (GIEE) \* “La Caixa” Incorpora Programme \* Osona Childhood, Adolescence and Families Committee \* Catalan Union of Early Care Centres (UCCAP) \* XEISOR (Network of Social-Employment Integration Institutions from Osona to the Ripollès) \* Vic Sustainable Schools Network \* Housing Agency of Catalonia Social Integration Housing Network \* Manlleu Network of Social and Solidarity Economy Initiatives.

## INSTITUTIONS IN WHICH WE HAVE A SHAREHOLDING

\* **L'ESGUARD TUTELAR FOUNDATION:** Sant Tomàs is its founding institution, and a member of the Board of Trustees.

\* **SINERGROUP (ASSOCIATION OF INSTITUTIONS WITH SOCIAL SYNERGY):** It includes 8 non-profit organisations that provide care for vulnerable groups. The general manager of Sant Tomàs has been its president since 2014.

\* **OSONAMENT:** Sant Tomàs is the founding institution, and it has been represented since the organisation was founded.

\* **DINCAT AND AEE S DINCAT:** Sant Tomàs is a member of the board and various working committees. It is also a member of the board of the Social Economy Association.

## SOCIAL ENTERPRISE AREA

**Tac Osona Foundation:** Established in 2009, the Foundation creates stable jobs to facilitate the employment and social integration of people with learning disabilities, developmental difficulties and vulnerable groups. It has the following subsidiary and associated companies:

\* **TAC OSONA EMPRESA D'INSERCIÓ, SLU:**

Established in 2020. Owned by the Tac Osona Foundation, and established with the support of Manlleu Municipal council. It specialises in social and occupational integration in the cleaning and area maintenance sector for people who have difficulty finding work. It employs forty-two people at risk of social exclusion.

\* **VIC VERD, SL:** Established in 2011 with Vic City Council and Recollida i Reciclatge. With the departure of Vic City Council, the Tac Osona Foundation holds 91.4% of the shares, and Recollida i Reciclatge S.L. holds the remaining 8.6%. It currently performs gardening services for the municipality of Vic and collects junk. It employs 28 people, of whom 20 have disabilities.

\* **TAC OSONA SERVEIS, SLU:** Established in 2021. Owned by the Tac Osona Foundation, it is an organisational improvement and an important complement to the work done by the Special Work Centre. The services are provided by professionals from the various work areas of the Special Work Centre, and leisure monitors at the Estel School and some others.

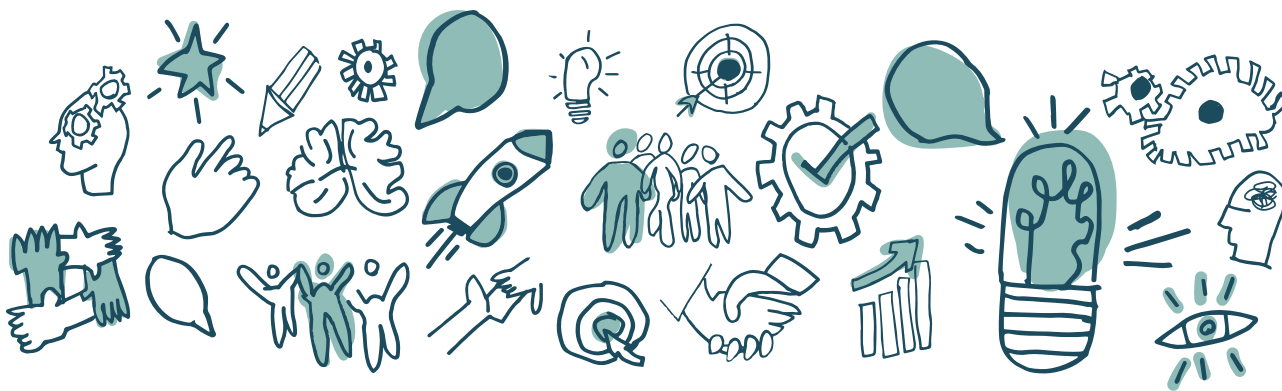
\* **ECOGRUP ECOLÒGICA, SL:** Established in 2012, the Tac Osona Foundation and the Viver de Bell-lloc Foundation hold 75% of the share capital in equal parts, and the remaining 25% is owned by private partners in the organic fruit and vegetable sector. It sells these products online, and it employs 5 people with intellectual disabilities.

\* **RECOLLIDA I RECICLATGE, SL:** Established in 1994, the Tac Osona Foundation has a 35% stake in its share capital. The company works in the collection of junk and recycling of plastic, cardboard and pallets. Twenty-four people work there, of whom five have learning disabilities.

\* **UTE MAPTAC:** Established in 2016. The MAP Foundation has a 75% shareholding, and the Tac Osona Foundation holds the remaining 25%. It provides gardening services in the municipality of Torelló.

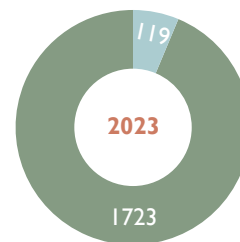
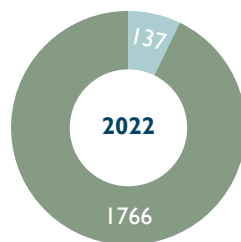
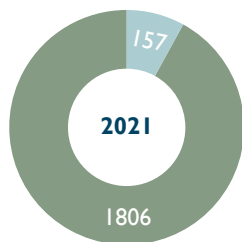
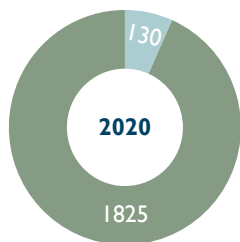
# CURRENT AND FUTURE PROJECTS

- Opening the Sant Pere home and more facilities in the north of the region.
- Implementing the Strategic Plan.
- Enhancing the organisation's products and services.
- Campaigning for increased salaries for workers in the disability care sector.
- Progress in promoting cognitive accessibility within the institution.
- Promoting the digital transformation of the organisation and technology to improve people's autonomy.
- Making the investments necessary to ensure the growth and improvement of services to people and their families.
- Overseeing the start of work on the Riudeperes Centre, Occupational Centre, Residential Home and Training Centre.



## COMMUNITY

Members ● Volunteers ●



## MEDIA IMPACT

229

TOTAL MEDIA APPEARANCES



PRESS 123



TELEVISION 23



RADIO 9



DIGITAL MEDIA 74

## WEB AND XARXES



35.342

WEBSITE VISITS



4.698

FACEBOOK FOLLOWERS



2.066

INSTAGRAM FOLLOWERS



3.296

TWITTER FOLLOWERS



1.293

LINKEDIN FOLLOWERS

# THE HIGHLIGHTS OF THE YEAR



## SANT TOMÀS APPROVES THE STRATEGIC PLAN

The Board of Directors and Board of Trustees of Sant Tomàs approve the institution's Strategic Plan for the next 3 years. The institution's new roadmap sets out 4 areas, 14 objectives and 71 actions to undertake by 2026 in order to take the institution forward, and make it sustainable and accessible. The Strategic Plan was drawn up over a year, with the participation of the various groups within the institution, and advice from external experts from the José Antonio Segarra Foundation linked to the IESE business school.



## CALANDRA WILL SAVE 80,000 LITRES OF WATER EVERY DAY IN 1 YEAR

The Calandra industrial laundry service will have a great impact on saving laundry water in one year, with a reduction in its water consumption from 100,000 litres per day in March 2023 to 20,000 litres per day for the same process in March 2024. This is a prerequisite in terms of ensuring the viability of the social project and the commitment to the environment.



## THE SANT TOMÀS KITCHEN OFFERS ITS MENUS THROUGH SELF-SERVICE VENDING MACHINES

The Sant Tomàs Kitchen has begun to offer its menus through self-service vending machines, which means that its products can be sold at any time and day of the week. Two of them are located at the University of Vic, and the third is in the hospital in Manlleu. The Osona-based start-up Awayter is the company that has manufactured and patented this machine, which enables the Sant Tomàs Kitchen to reach the end consumer with an immediate and uninterrupted service.



## THE MINISTER FOR EDUCATION VISITS THE ESTEL SCHOOL

The Minister for Education of Government of Catalonia, Anna Simó, visited the Sant Tomàs Estel Special Education School, and learned about how the school operates and its main challenges for the future, as well as special education schools. She met the management team of the organisation and the educational centre, and was presented with a gift by Josué, a secondary school student.



## SANT TOMÀS OPENS A CAFETERIA TO PROVIDE TRAINING AND EMPLOYMENT OPPORTUNITIES

Sant Tomàs has opened a cafeteria in Vic to provide training and employment opportunities for people with disabilities and at risk of social exclusion. A maximum of 12 people will be able to receive training in the cafeteria and its kitchen, and in wide-ranging skills and can do internships in the same space. It is a space to highlight the work done by the Sant Tomàs Kitchen and the people receiving care there.



## FULL TO CAPACITY AT THE PREMIÈRE OF THE LITTLE

More than 90 people, including users, professionals, family members and volunteers starred in the musical The Flight of the Little Prince, a project by the Manlleu Occupational Centre that was seen by almost 600 people. It is an adaptation of Antoine de Saint-Exupéry's classic which helped raise public awareness of everyone's ability to undertake all kinds of initiatives.





### JOAN CASANY - FINALIST IN THE OSONA RESIDENT OF THE YEAR AWARD

The president of Sant Tomàs, Joan Casany, received the award as finalist of the Osona Resident of the year from El 9 Nou newspaper, with Sandra Plans. The newspaper nominated the president of Sant Tomàs for the launch of the Sant Tomàs potato crisp workshop for the UVic medal and for reaching an agreement with the Government of Catalonia for the refurbishment of the Riudeperes residence, involving an investment of 3.1 million Euros.



### SANT TOMÀS OPENS A WORKSHOP STORE TO FACILITATE COMMUNITY WORK

Sant Tomàs has opened a Workshop Store in the centre of Vic to promote community work, which will be used by 8 users. It will provide a space for the creation of social handicrafts and a physical point of sale for the products made at the institution. The Sant Tomàs Workshop Store is a networking initiative that highlights the value the work of people with intellectual disabilities.



### 36 ATHLETES FROM THE CLUB CAR GO TO THE SPECIAL OLYMPICS

36 people linked to the Sant Tomàs Club CAR leisure and sports service have taken part in the Special Olympic Games that were held in Granollers. They participated in the disciplines of football, boules, table tennis and swimming, and won 8 gold, 5 silver, 3 bronze and 3 participation medals. The 36 participants from Sant Tomàs were between 21 and 60 years old, and were among the almost 1,500 Catalan, Spanish and international participants who competed.



### SANT TOMÀS HAS A COGNITIVE ACCESSIBILITY VALIDATION GROUP

Sant Tomàs has formed a validation group in order to be able to identify opportunities for improvement in cognitive accessibility. This group of four people linked to the Manlleu Occupational Centre have been trained to begin to identify how spaces and communications can be made more accessible to everyone.



### SANT TOMÀS OPENS THE NEW CALLDETENES CARE HOME

Twelve people now live in the Calldetenes care home, which was built in 2020 but could not be opened due to a lack of public funds. The new facility is a response to the housing needs of 12 elderly people, some of whom had been on the waiting list for more than 10 years, and its proximity to the occupational centre offers them a better quality of life.



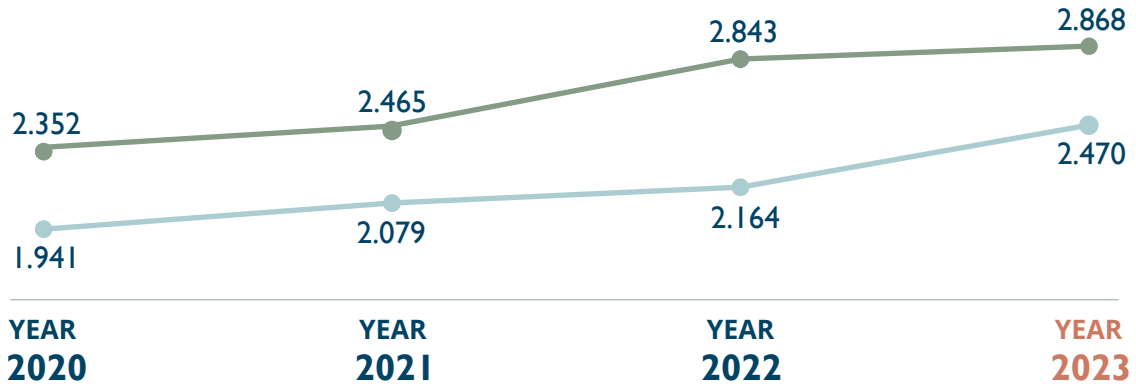
### THE PRESIDENT OF THE GOVERNMENT OF CATALONIA INAUGURATES

The president of the Government of Catalonia, Pere Aragonès inaugurated the Sant Tomàs potato crisp production facility in Manlleu, and visited the new facilities. Aragonès heard about the production process from all the people who work there, and described the project as “an example of the spirit of improvement” and said that “the quality of a society is measured by the opportunities it offers to vulnerable people.”

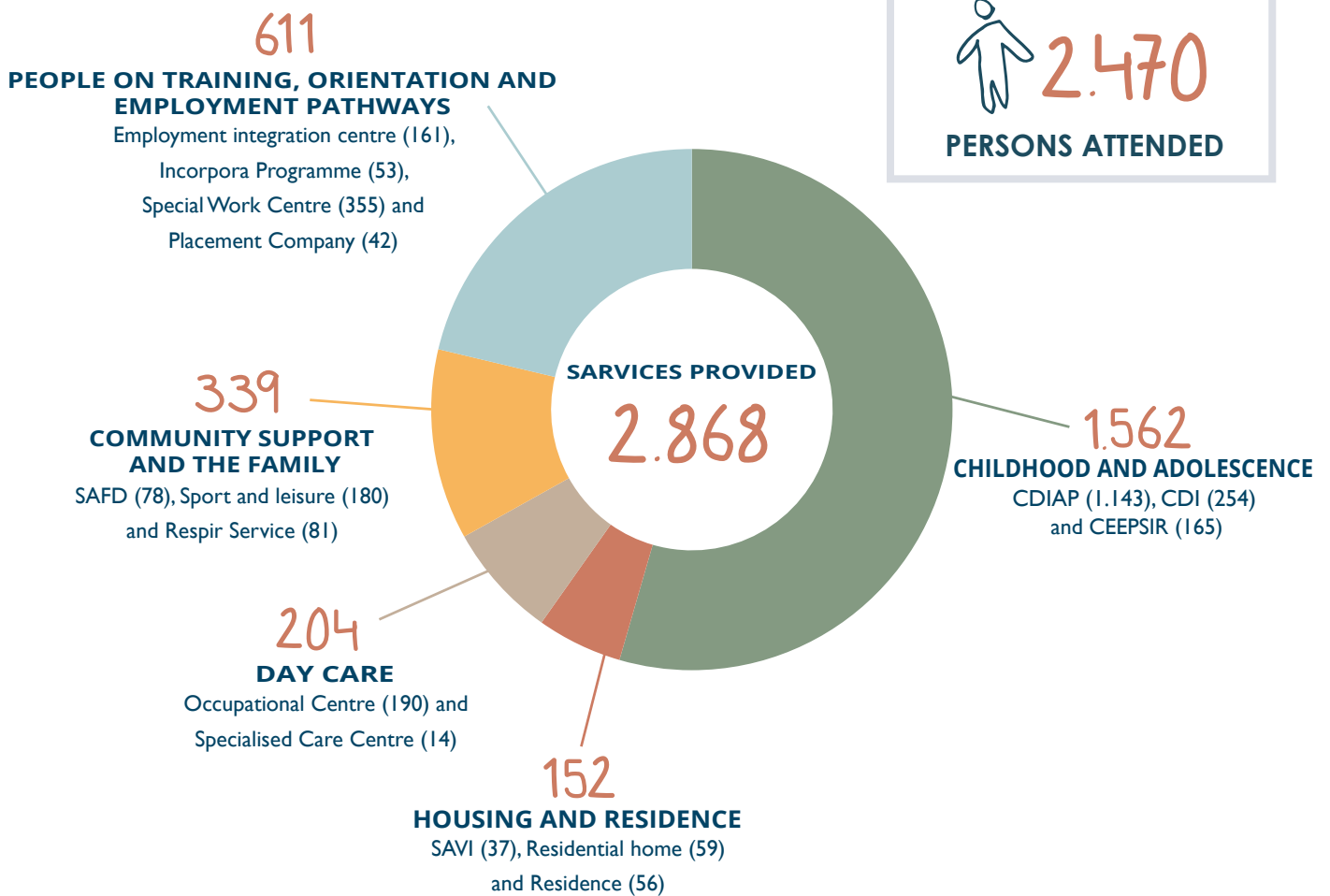
# PERSONS ATTENDED

## PAST

Services provided ● Persons attended ●

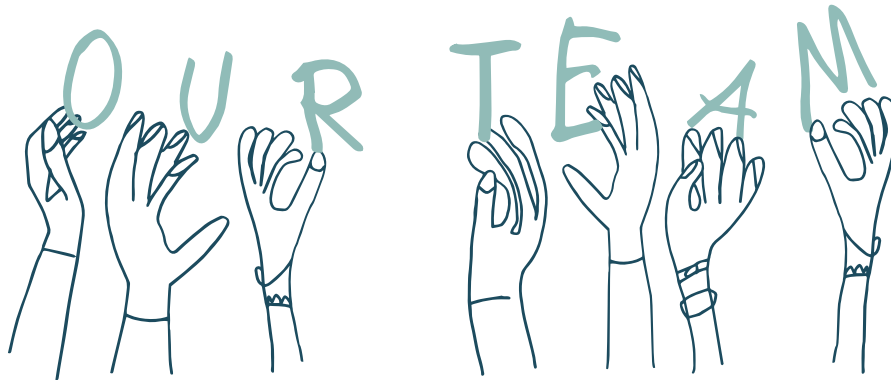


## PEOPLE RECEIVING CARE AND SERVICES PROVIDED



# OUR TEAM

## WORKERS



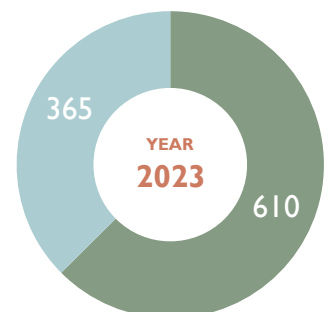
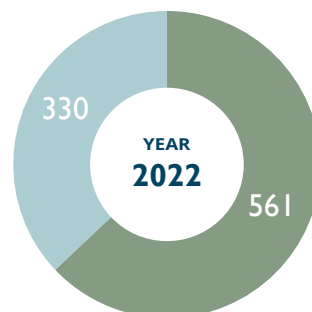
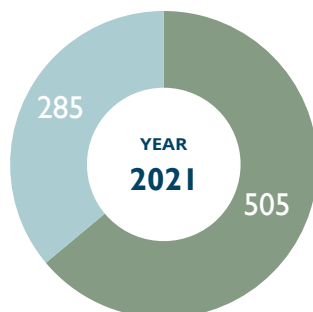
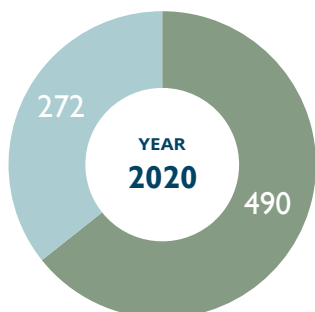
\* Aggregated data from the Sant Tomàs Association, Sant Tomàs Foundation, Tac Osona Foundation, Tac Osona work placement enterprise, Tac Osona Services and Vic Verd.



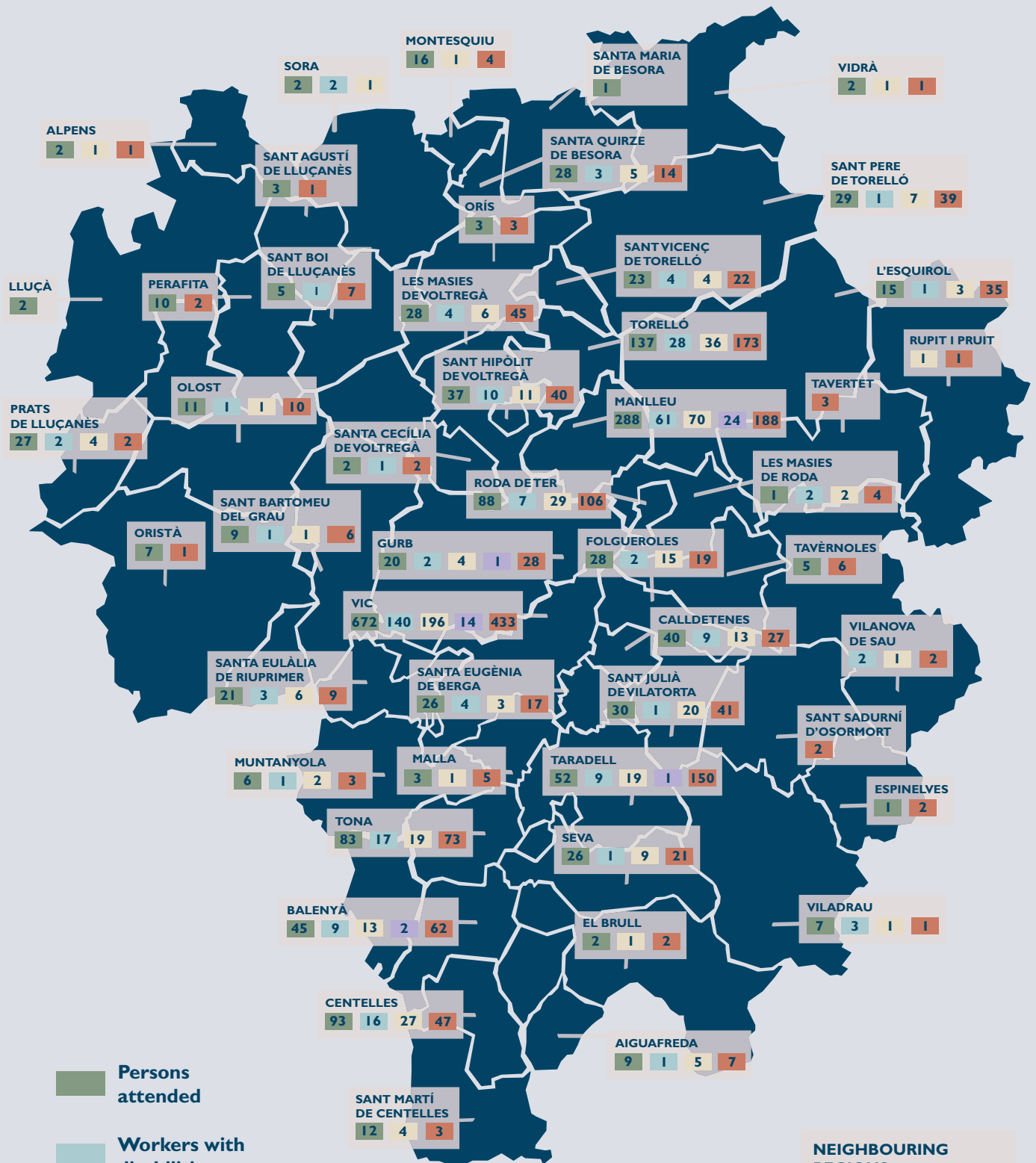
36 people at risk of social exclusion trained through the "la Caixa" Foundation Incorporation Programme. Eleven of them have found work.

Female workers ●

Male workers ●



# THE IMPACT OF SANT TOMÀS IN THE REGION



- Persons attended
- Workers with disabilities
- Workers without disabilities
- Workers at risk of social exclusion
- Partners

## NEIGHBOURING REGIONS

Bages, Berguedà, la Garrotxa, la Selva, Moianès, Ripollès and Vallès Oriental

22 4 23 24

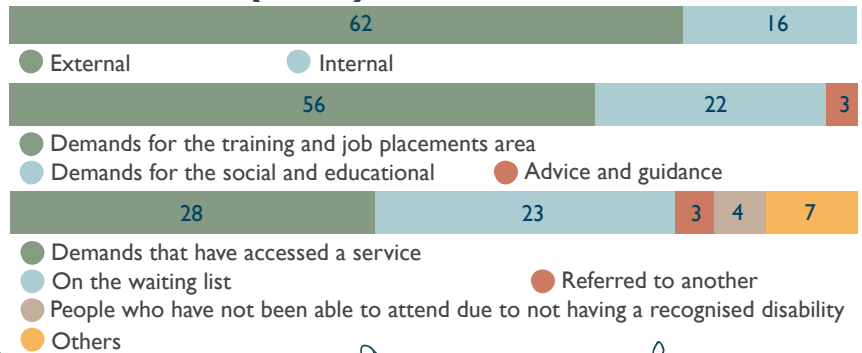
## OTHER REGIONS

21 2 12 29

# SERVICES TO PERSONS

## Family and Demand Assistance Service (SAFD)

This service deals the demands of adults and their families and provides the appropriate follow-up. It coordinates all the organisation's work aimed at families, and promotes their involvement through wide-ranging projects and participation spaces.



78

NEW DEMANDS

136

PEOPLE ON THE WAITING LIST

1

PROFESSIONAL

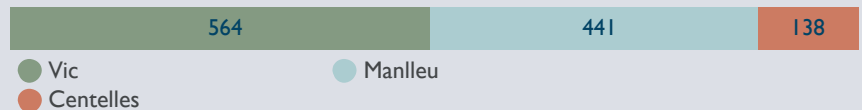
12

VOLUNTEERS

## Tris Tras Childhood Development and Early Attention Centre (CDIAP)



A specialised centre that is part of the Catalan Social Services System. It carries out a range of care and preventive actions for children aged 0 to 6 years old who have developmental disorders or who are in a situation of social, psychological or biological risk.



1.143

CHILDREN ATTENDED

28

PROFESSIONALS

4

TRAINEES

## Center for Integral Development (CDI) Espai Viu



A service that provides continuity for the care provided by CDIAP Tris Tras, sharing the same methodological approach. It provides support for children aged 6 years old and over and young people aged up to 18 who require intervention in the motor, cognitive, educational, communicative and emotional areas. This is a nonsubsidised service.



254

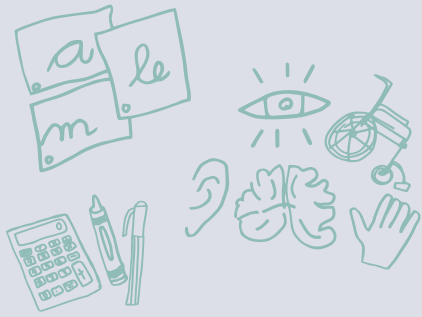
CHILDREN ATTENDED \*

7

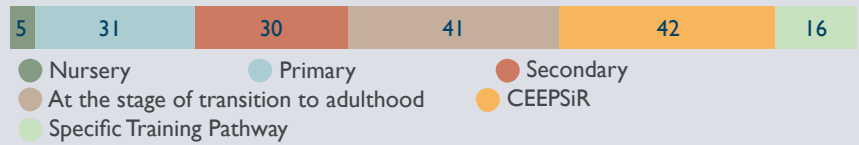
PROFESSIONALS

\* Some children use more than

## Special Education center Service and Resource Provider (CEEPSiR L'Estel)



A chartered special education school that provides individualised support to foster personal outcomes that promote presence, participation, learning and success in people's usual environments. The centre also provides support and resources for inclusive education.



**165**  
ALUMNOS

**66**  
PROFESSIONALS

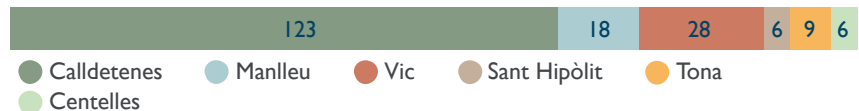
**2**  
VOLUNTEERS

**11**  
TRAINEES

## Sant Tomàs Occupational Centre



This centre provides adults with intellectual disabilities with an alternative to job placements. It aims to create a space that promotes integration, personal development and social awareness to motivate the person concerned to play an active role in society. Its services are Mà a Mà social handicraft, the Autentic.cat graphic design service and Sant Tomàs traditionally-made chocolate.



**190**  
PERSONS ATTENDED

**61**  
PROFESSIONALS

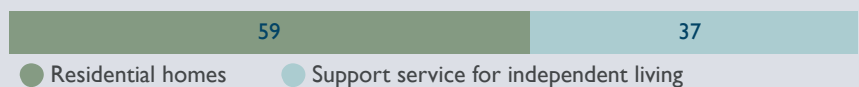
**71**  
VOLUNTEERS

**9**  
TRAINEES

## "Clarella" housing service



Personalised support for adults with learning disabilities in residential homes or through the autonomy support programme in their own homes, both in apartments managed by the organisation and in their family homes or homes of origin, to foster their maximum independence, personal and social autonomy.



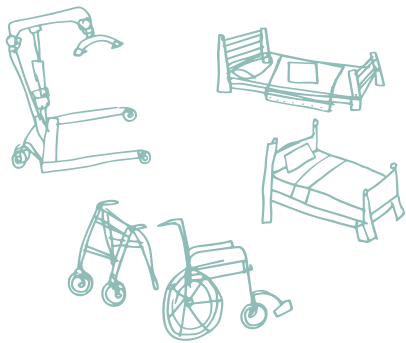
**96**  
PERSONS ATTENDED

**73**  
PROFESSIONALS

**9**  
VOLUNTEERS

**4**  
TRAINEES

## Riudeperes Centre



Residential care or day care service for people with intellectual disabilities who require general support and who may have additional physical or mental health problems. This Centre is part of the care network of the Ministry of Labour, Social Affairs and Families of the Government of Catalonia.



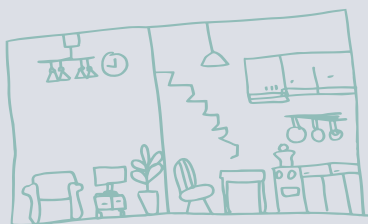
**70**  
PERSONS ATTENDED

**88**  
PROFESSIONALS

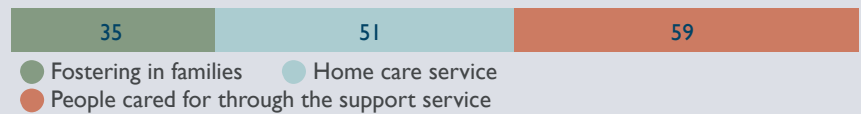
**16**  
VOLUNTEERS

**4**  
TRAINEES

## Respite and specialised home care service (SADE)



This service offers families who have a member with an intellectual disability the opportunity to take a break from their role of carers to solve specific care needs outside the family home, specific support in daily care, hospital monitoring and support inside the home, among other services.



**81**  
PERSONS ATTENDED \*

**28**  
PROFESSIONALS

141 people have received specific support through the Dincat community environments programme

\* Some people use more than one

## Club CAR leisure and sports service



This service coordinates various opportunities for leisure and sport in local community environments for people with learning disabilities. Sport improves physical fitness and fosters the ability to make choices and relate to society. Leisure is fundamental and necessary for personal growth and development.



**180**  
PERSONS ATTENDED \*

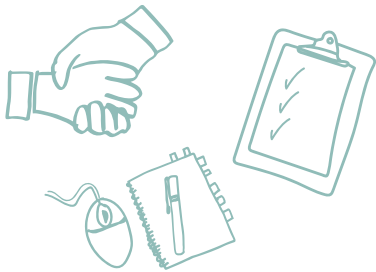
**2**  
PROFESSIONALS

**19**  
VOLUNTEERS

\*Some people do both sports and leisure activities

# SERVICES TO COMPANIES AND INSTITUTIONS

## EINA TRAINING AND JOB PLACEMENT CENTRE



This centre provides overall care through job training and providing the necessary support for both the individual and the company during the job placement process. It also monitors the employment of people who have been recruited to ensure their job stability and effective coordination with the contracting party.



People with intellectual disability placed in companies



PERSONS ATTENDED



WORK TRAINING COURSES



PERSONS PARTICIPATING IN OCCUPATIONAL TRAINING ITINERARIES



NEW PEOPLE HIRED IN COMPANIES



WORK INTERSHIPS IN COMPANIES

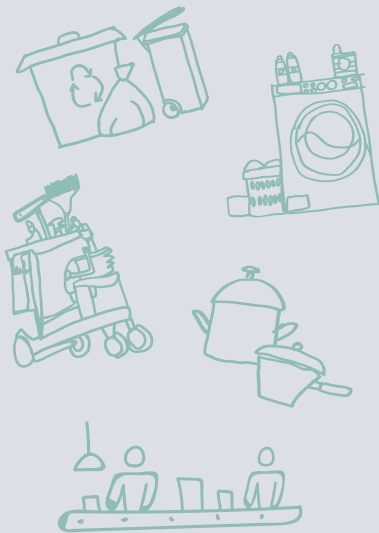


PROFESSIONALS

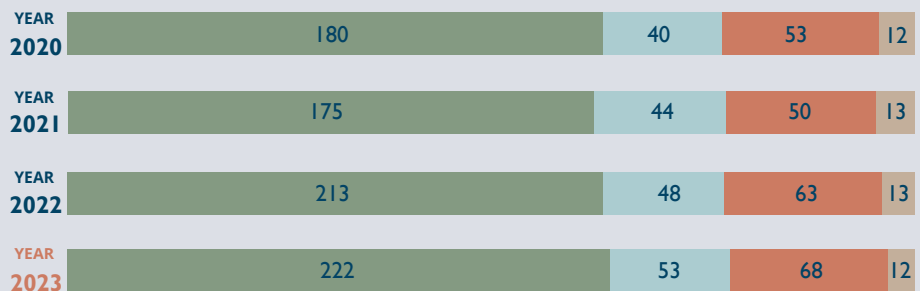


VOLUNTEERS

## TAC OSONA SOCIAL ENTERPRISE



The Tac Osona Special Work Centre is a social enterprise where more than 70% of the workers are people with intellectual disabilities. They work with the support of monitors at their workplace. Psychologists and social workers provide comprehensive support for the person and their family which apart from the job placement itself, contributes to their full social inclusion.



● Intellectual disability  
● Physical disability

● Mental Illness  
● Sensory disability



WORKERS WITH DISABILITIES \*



PROFESSIONALS



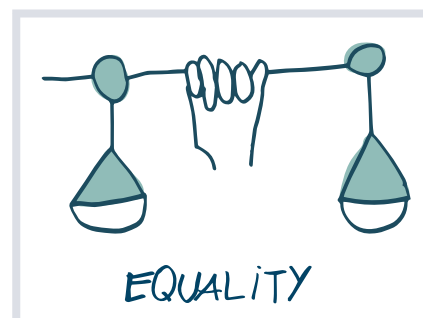
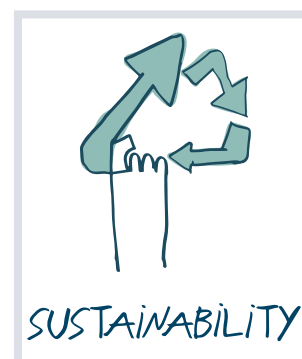
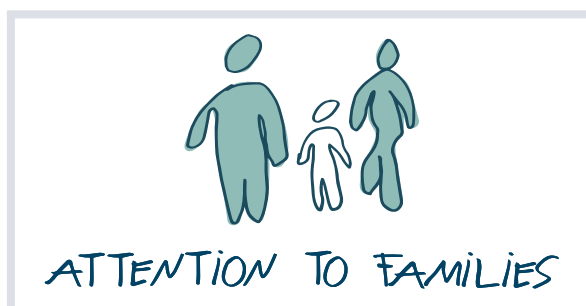
TRAINEES

\* Aggregated figures for the Tac Osona Special Work Centre, Sant Tomàs Foundation Special Work Centre and Vic Verd Special Work Centre.



# SANT TOMÀS COMMITTEES

Sant Tomàs has various working committees covering different areas enabling cross-disciplinary work. The current committees are:



## QUALITY AND EXCELLENCE

We remain committed to on a comprehensive and broad-based quality management system for the entire institution that complies with standards related to quality (ISO 9001:2015), environmental issues (14001:2015) and occupational health and safety (ISO 45001:2018) and food safety management (ISO 22000:2005) in the laundry. The certifications of all services have been renewed.

Other projects carried out are the audit and preparation of the Sant Tomàs Criminal Prevention Plan, the review of the culture of privacy to protect data efficiently in compliance with the European Regulation on the Protection of Personal Data (GDPR). The exposure to psychosocial risks of workers in Sant Tomàs has also been identified, located and assessed.

We have drawn up and approved the Sant Tomàs Strategic Plan, aligning all actions with the Sustainable Development Goals (SDG).



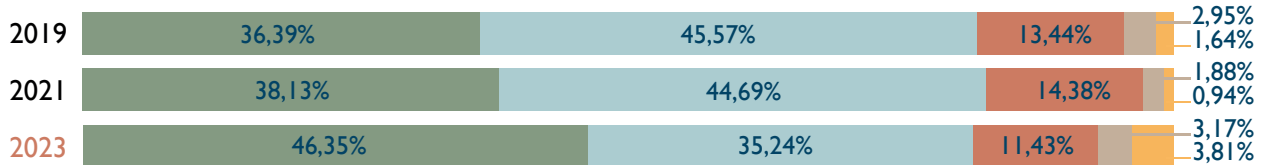
# RESULTS

Very much ● A lot ● A little ● Not at all ● DK/NA ●

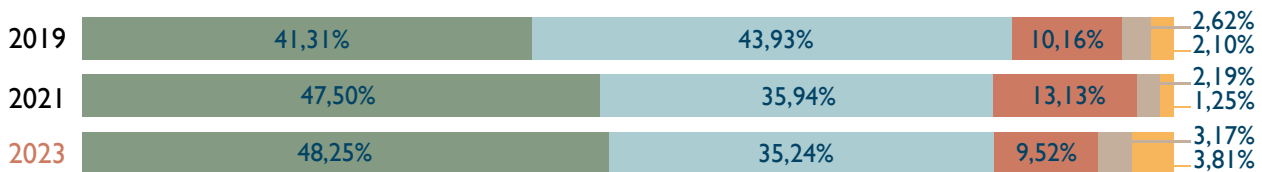
Rate your degree of satisfaction with Sant Tomàs



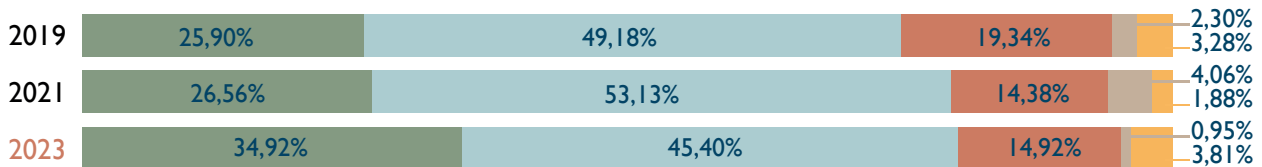
Do you receive all the necessary information from Sant Tomàs?



To what extent does Saint Thomas help you to have peace of mind and trust in the future?



Rate the extent to which the participation of families in Sant Tomàs is enhanced



How satisfied are you with the service you are associated with?



Do you have a clear contact professional to ask questions and request support with regard to your relative?



Is your relative happier and enjoying a higher quality of life thanks to the support provided by the service?



Are your proposals listened to and taken into account?



# OUR ACTIVITIES

TRAINING AND SUPPORT  
FOR JOB



OCCUPATIONAL  
ENCLAVES



INDUSTRIAL  
CLEANING



CAR PARK AND FACILITIES  
MANAGEMENT

GARDENING AND  
FORESTRY SERVICES



MAINTENANCE OF STREET  
FURNITURE AND ROAD SIGNS

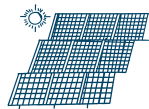


ENVIRONMENTAL  
SERVICES



INDUSTRIAL  
LAUNDRY

INSTALLATION AND  
MAINTENANCE OF SOLAR  
PANELS



COOKING FOR  
LARGE GROUPS



INDUSTRIAL  
MANIPULATION  
AND SERVICES

CLEANING AND  
DISINFECTION  
OF AREAS



SUPPORT FOR  
MUNICIPAL  
WORKERS



AUTENTIC.CAT  
GRAPHIC DESIGN SERVICE



CHRISTMAS BOXES  
FOR COMPANIES



L'OBRAJOR DE  
SANT TOMÀS



THE SANT TOMÀS  
WORKSHOP  
STORE

THE SANT TOMÀS  
CAFETERIA



# PARTNER COMPANIES AND INSTITUTIONS

**1.116** client companies and institutions

## COMPANIES THAT HAVE HIRED US IN 2023

\*Ay. de Sant Pere de Torelló \*Ay. de Centelles \*Ay. de Gurb \*Ay. de Sant Bartomeu del Grau \*Ay. de Tona \*Albet \*Aldi Supermercats \*Arrel, botiga ecologica \*Bekaert Textiles \*Benito Urban \*Bon Preu \*Cacao Sampaka \*Cadersem \*Càrniques d'Osona \*Carrefour \*Cata Electrodomèstics \*Cetriko \*Clínica Dental Sant Fortià \*Companyia d'Uniformes \*Covit \*Creu Roja Osona \*Divasa Farmavic \*E3A Technologies \*Ecoveritas \*Eix Prevenció \*Elausa electronics \*Embotits Espina \*Embotits Monells \*Embotits Salgot \*Esteve Fred \*Evofeed \*Fes mes \*Flosty Standard Republic \*Font Verges \*Formatges Mas el Garet \*Frigorífics Ferrer \*Fruites Germans Jimenez \*Frusano \*Fund. Atlàntida \*Fund. Escoles de Taradell \*Fund. Hospital de la Santa Creu Vic \*Gràfiques Manlleu \*Granja Armengol \*Granja Caracac \*Granja Castelló \*Grup Baucells Alimentació \*Grup Carrera \*Hotel Prudenci Vila-Tona \*Integracions Agrocatalunya \*Jubany \*La Doma \*La Farga Grup \*Lacats Adecor \*Leroy Merlin \*Lidl \*Liquats Vegetals \*LP Foodies \*Macson \*Madel \*Mafriges \*Mc Donald's \*Mec. De la fusta Kim \*Metal Graphic \*Mimcord \*Montronic \*Novatilu \*Patel \*Prezero \*Proquimia \*Pulit \*Quiràlia \*Recollida i reciclatge \*Residència de la Santa Creu de l'Esquirol \*Rètols C3 \*Saits \*Sala de desfer-magatz. J.Viñas \*Seidor \*Serra Rifà \*Sumar \*Supeco \*Supermercat Suma, El rebost \*Tesem S.A. \*Universitat de Vic \*Vedruna Escorial Vic \*Vial net Vic \*Zelent Iberica

## COMPANIES OFFERING INTERNSHIPS

\*Abacus Cooperativa \*Ay. Aiguafreda \*Ay. de Vic \*Ay. de Sant Martí de Centelles \*Amat Fust \*Argós Clínica Veterinària Vic S.L. \*Artipà \*Associació Tapis \*BBVA \*Becute-Perfect Nails and Eyes \*Biblioteca Pilarin Bayes \*Bisbat de Vic \*Cadencia Estratègica \*Cals Avis Residència Rocaprevera \*Canelons Crossandra \*Casa Tió \*Club Tennis Vic \*Confeccions Mado \*Costertec \*Decathlon \*Disfarvic \*Distribucions JEP \*EquesVic \*Escola Bressol Colors \*Farmàcia Viver \*Fastel \*Forn Franquesa \*Fruites Blas Jiménez \*Fund. Educació i Art \*Girbau \*Goufone \*Granja El Raurell \*Grans del Lluçanès \*Grup Alvic Mobiliari \*Hotel Can Pamplona \*Inst. Hnas. Josefines de la Caridad \*Isern Electrodomèstics \*IVSiberica \*Jardineria Ayza \*Lasevaweb \*Les Basses \*Les Josefines \*Merkal calzados \*Montseny Comunicació \*Muntanya de Llibres \*Noroto \*Pages Advocats Associats \*Recrea Gastronomia \*Sambucus \*Seleflor \*Som Prevenció \*Technoform \*Transports Codina \*Unipreus (Walla) \*Universitat de Vic \*Up rooms Vic \*Xocolating 1944

## MAIN CLIENTS

INSTITUCIONS: \*Agrupació de Sords de Vic i comarca \*Ay. d'Aiguafreda \*Ay. de Balenyà \*Ay. de El Brull \*Ay. de Calldetenes \*Ay. de Centelles \*Ay. d'Espinelves \*Ay. de Folgueroles \*Ay. de Gurb \*Ay. de la Vall d'en Bas \*Ay. de les Masies de Roda \*Ay. de les Masies de Voltregà \*Ay. de Manlleu \*Ay. de Roda de Ter \*Ay. de Ripoll \*Ay. de Sant Hipòlit de Voltregà \*Ay. de Sant Julià de Vilatorrada \*Ay. de Sant Pere de Torelló \*Ay. de Sant Quirze de Besora \*Ay. de Santa Eulàlia de Riuprimer \*Ay. de Santa Eugènia de Berga \*Ay. de Seva \*Ay. de Taradell \*Ay. de Tona \*Ay. de Torelló \*Ay. de Vic \*Ay. de Viladrau \*Ay. de Vilanova de Sau \*Ass. Síndrome d'Asperger Osona \*Ass. Casal d'Estiu Centelles \*Ass. Sinergrup \*Bisbat de Vic \*CEO Maresme \*Consell Comarcal d'Osona \*Espai Natural Guillerries Savassona \*Consell Comarcal d'Osona \*Consorci Hospitalari de Vic \*Consorci d'Osona de Serveis Socials \*Consorci Vall Ges, Orrís i Bisaura \*Cooperativa de treball Calandra \*Dincat Federació \*Diputació de Barcelona \*Federación Regnum Christi \*Fund.

Ampans \*Fund. Lluïsa Oller \*Fund. Bancària "La Caixa" \*Fund. Centre Mèdic Psicopedagògic d'Osona \*Fund. Hospital de la Santa Creu \*Fund. Impulsa \*Fund. Institució Puig-Porret \*Fund. Map \*Fund. Pere Mata \*Fund. Pere Tarrés \*Fund. Privada Aspros \*Fund. Privada escola Casals Gràcia \*Fund. Privada de gestió Clear \*Fund. Privada president Amat Roumens \*Fund. Sot dels Pradals \*Fund. Tutelar l'Esguard \*Fund. Universitària Balmes \*Fund. Viver de Bell-lloc \*Generalitat de Catalunya \*Institut Català de la Salut Institut del Moianès \*Mancomunitat la Plana \*OAR Vic \*Organisme Autònom de Fires i Mercats de Vic \*UTE MAPTAC

EDUCATIONAL SECTOR: \*Escola Guillem de Montrodon \*Escola Sagrats Cors \*FEDAC Pare Coll Vic \*Fund. Educació i Art \*Fund. Estudis Superiors en Ciències de la Salut \*Fund. Privada Col·legi Sant Genís i Santa Agnès \*Fund. Universitària Balmes \*Fund. Vedruna Gràcia \*Llar d'infants el Patufet \*Institut escola Mestre Andreu \*Serveis Territorials de Catalunya \*UVic-UCC

COMPANIES: \*Administració de finques Julita Novellas \*AERF \*Agència Nord \*Aigües Vic \*Alimentària Tarradellas Mas Galí \*Animua \*Aparcament del Passeig Vic \*Aplicacions i muntatges Torelló \*Aquarius \*Argemí prefabricats \*Arka RH 2020 \*Array Plàstics \*Artifex Infraestructures \*Aspy prevenció \*A.T.F. Fill de J. Cuberta \*Ausa Comptable \*Avicola i Ramadera Casellas \*Avient group \*Axilone Metal \*Barry Callebaut Iberica \*Barry Callebaut Manufact. Iberica \*Basset Restaurant \*Baulenas Aulet \*BBVA \*Benito Urban \*Berna Tèxtil \*Blancafot 2000 \*Boira Comercial Tècnica \*Bon Preu \*Bugaderia Neutral \*Bugaderia Zurizuri \*Camp Base \*Càmping Glòria \*Can Bayarri \*Can Pamplona \*Can Xarina \*Carnovic \*Casa Ametller \*Casa Tarradellas \*Casals Reig \*Cedinsa conservació \*Certis obres i serveis \*Cetriko \*Cigahotels España \*Colònies i Lleure \*Consultori Bayés \*Costertec \*Curogar \*D'Ausa Gestió d'Aparcaments \*Depuradores d'Osona \*Dinacil \*Divasa Farmavic \*Ecogrup Ecològica \*Edelweiss Paper \*Egavic Serveis d'Enginyeria \*Eixida Garstronòmica \*Elis Manomatic \*Embotits Espina \*Enprat \*Equip Assistència Primària Vic \*Erma Plus Hotels \*Esbelt \*Escorxador Frigorífic Osona \*Esperit de Vici \*Esporc \*Estructures muntatges i soldadores JS \*Eukarya Xocolata \*Euroclima difusion \*Ferreteria Comella \*Fèrules i Vàlvules \*Finques Osona \*Fred Vic \*Fundació Antoni Serra Santamans \*Fundiciones de Roda \*Garmin Iberica \*Girbau \*Grup Ledexport \*Grupo Hoteles Playa \*Hidro domèstics \*Hostal Bofill \*Hostal La Glòria les quatre emes \*Hosteleria de serveis col·lectius \*Ilunion Bugaderies de Catalunya \*Industrias Tekor \*Indyk internacional de comerç de PR \*Infocentre \*IQAP \*Isern Electro \*Konecranes and demag ibérica \*La Farga Lacambra \*Laboratoris Neusc \*Lasevaweb global web services \*Liquats Vegetals \*Mafriges \*Mapex \*Martí Albó Baranera \*Masai Mara 2006 \*Materials de construcció Gil \*Mimcord \*Montronic \*Movil, SA. \*Nando Jubany \*Naturalea \*Nirvauto Vallès \*Nordlogway \*Nuri i Espadaler \*Olecram 22 \*Onaigua EPEL \*Onnera Laundry Barcelona \*Panificadora Vic \*Paradores de Turismo de España \*Parés Canudas \*Pasquina \*Patel \*Pedro Roquet \*Pibasa serveis \*Prezero España \*PI 10 advocats \*Proquimia \*Pujolasos \*Quadpack impressions \*Recollida i Reciclatge \*Rivasa Intercontinental \*Rodi \*Rodin \*Roquet Hydraulics \*Rovira Motor \*SC Gestió \*Seidor Solutions \*Serveis hotelers Vila Dot \*Seven Languages \*Signia Consultors \*Silgan dispensin Systems Covit Europe \*Socid. General guas de Barcelona \*Softvic \*Some \*Splendid Foods \*Suara Serveis \*Sumar \*Tell Me Vic \*Tesem \*Total Elite Trade \*Tree Mobile Grup \*Triposona \*Turrís Panem \*Union promotora de Inversiones \*Urbaser \*UTE Eix Transversal \*UTE Lots Socials Singulares 4 \*Vent de França la Tramuntana \*Vernis & Taberner \*Vilasis Distribucions \*Voltregà Trading \*Xemivica Distribució \*25 Osona Bus

# FINANCIAL DETAILS

## SANT TOMÀS ASSOCIATION

BALANCE SHEET	2022 (thousand €)	2023 (thousand €)
Non-current assets	308	69
Current assets	551	152
<b>TOTAL ASSETS</b>	<b>859</b>	<b>221</b>
Net assets	686	118
Non-current liabilities	77	15
Current liabilities	96	88
<b>NET ASSETS AND LIABILITIES</b>	<b>859</b>	<b>221</b>

PROFIT AND LOSS ACCOUNT	2022 (thousand €)	2023 (thousand €)
Income from activities	533	221
Grants awarded and other expenses	0	0
Variation in stocks	0	0
Supplies	-17	-5
Other income from activities	3	2
Personnel expenses	-505	-189
Other operating expenses	-18	-26
Depreciation of fixed assets	-3	-3
Grants, donations and legacies transferred to result	2	2
Impairment and results of disposals of non-curr. assets	0	0
Other results	-46	0
<b>OPERATING RESULT</b>	<b>-50</b>	<b>2</b>
Financial income	0	0
Financial expenses	0	0
<b>FINANCIAL RESULT</b>	<b>0</b>	<b>0</b>
<b>RESULTAT ORDINARI</b>	<b>-50</b>	<b>2</b>
Other results *	-150	-568
<b>PRE-TAX RESULTS</b>	<b>-50</b>	<b>2</b>
<b>TAXES</b>	<b>0</b>	<b>0</b>
<b>RESULT FOR THE FINANCIAL YEAR</b>	<b>-200</b>	<b>-566</b>

## SANT TOMÀS FOUNDATION

BALANCE SHEET	2022 (thousand €)	2023 (thousand €)
Non-current assets	11.122	12.241
Current assets	4.521	4.872
<b>TOTAL ASSETS</b>	<b>15.643</b>	<b>17.113</b>
Net assets	11.583	12.322
Non-current liabilities	820	1.471
Current liabilities	3.239	3.321
<b>NET ASSETS AND LIABILITIES</b>	<b>15.643</b>	<b>17.113</b>

PROFIT AND LOSS ACCOUNT	2022 (thousand €)	2023 (thousand €)
Income from activities	12.721	14.361
Grants awarded and other expenses	-16	-16
Variation in stocks	6	-11
Supplies	-1.655	-2.004
Other income from activities	214	223
Personnel expenses	-9.727	-10.633
Other operating expenses	-1.345	-1.536
Depreciation of fixed assets	-270	-332
Grants, donations and legacies transferred to result	185	207
Impairment and results of disposals of non-curr. assets	0	0
Other results	30	-2
<b>OPERATING RESULT</b>	<b>143</b>	<b>258</b>
Financial income	0	0
Financial expenses	-18	-44
<b>FINANCIAL RESULT</b>	<b>-18</b>	<b>-44</b>
<b>RESULTAT ORDINARI</b>	<b>125</b>	<b>214</b>
Other results **	0	83
<b>PRE-TAX RESULTS</b>	<b>125</b>	<b>296</b>
<b>TAXES</b>	<b>0</b>	<b>0</b>
<b>RESULT FOR THE FINANCIAL YEAR</b>	<b>125</b>	<b>296</b>

## FOUNDATION TAC OSONA AND COMPANIES DEPENDENTS

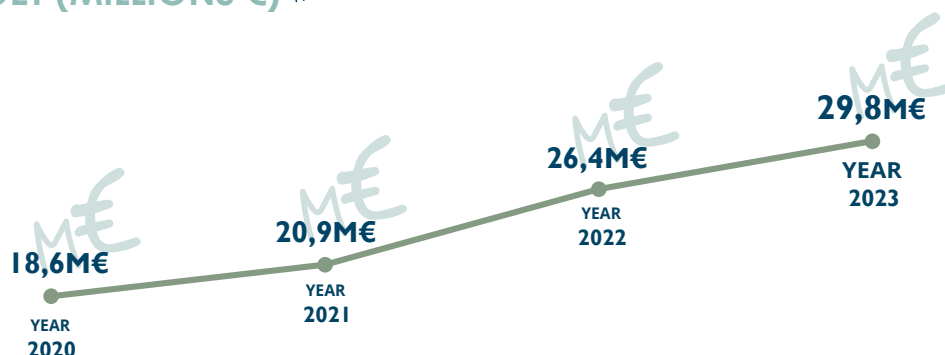
BALANCE SHEET	2022 (thousand €)	2023 (thousand €)
Non-current assets	4.874	5.283
Current assets	5.415	5.410
<b>TOTAL ASSETS</b>	<b>10.289</b>	<b>10.693</b>
Net assets	6.387	7.095
Non-current liabilities	1.225	1.056
Current liabilities	2.677	2.542
<b>NET ASSETS AND LIABILITIES</b>	<b>10.289</b>	<b>10.693</b>

PROFIT AND LOSS ACCOUNT	2022 (thousand €)	2023 (thousand €)
Income from activities	13.717	14.028
Grants awarded and other expenses	0	0
Variation in stocks	0	17
Supplies	-1.446	-804
Other income from activities	-91	29
Personnel expenses	-9.860	-11.231
Other operating expenses	-1.430	-1.545
Depreciation of fixed assets	-355	-452
Grants, donations and legacies transferred to result	49	76
Impairment and results of disposals of non-curr. assets	0	13
Other results	-11	-5
<b>OPERATING RESULT</b>	<b>574</b>	<b>127</b>
Financial income	17	16
Financial expenses	-110	-47
<b>FINANCIAL RESULT</b>	<b>-93</b>	<b>-31</b>
<b>RESULTAT ORDINARI</b>	<b>480</b>	<b>95</b>
Other results	0	0
<b>PRE-TAX RESULTS</b>	<b>480</b>	<b>95</b>
<b>TAXES</b>	<b>-10</b>	<b>-3</b>
<b>RESULT FOR THE FINANCIAL YEAR</b>	<b>470</b>	<b>92</b>

\* Non-recoverable donation of liquidity - 2022. 2023 donation of shares in Vic Verd to the Tac Osona Foundation and cancellation of debt transfer Riudeperes to the Sant Tomàs Foundation

\*\* 2023: Cancellation by the Sant Tomàs Association of the debt for the transfer of Riudeperes to the Sant Tomàs Foundation and provision for claims at the Estel school

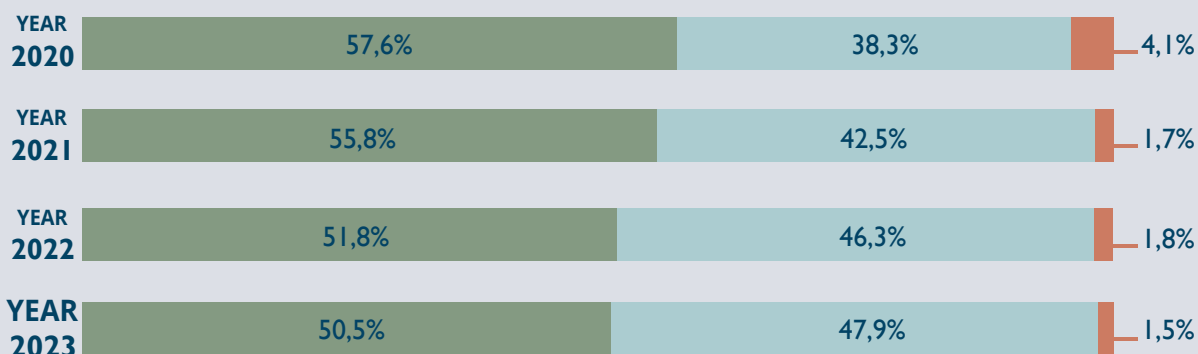
## TOTAL BUDGET (MILLIONS €) \*



\* Aggregated figures for the Sant Tomàs Association, Sant Tomàs Foundation, Tac Osona Foundation, Tac Osona Insertion Company, Vic Verd and Tac Osona Services

## INCOME

Public administrations ● Internal ● Private ●

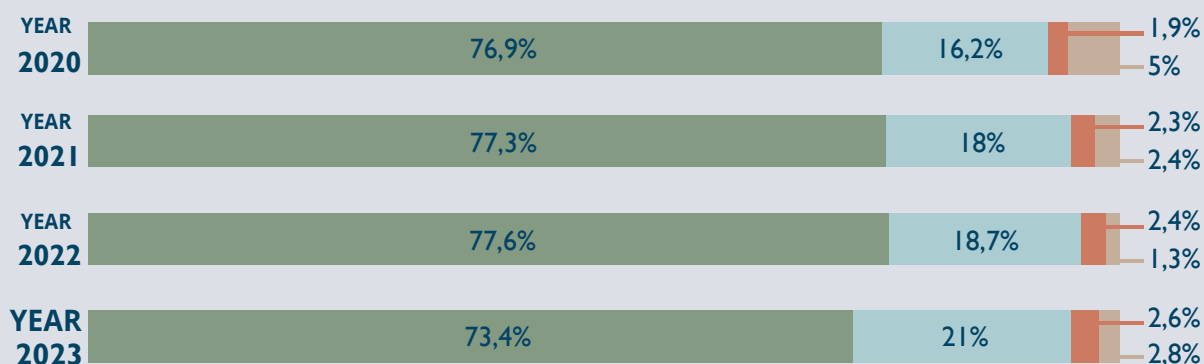


## SOURCE OF INCOME

	AÑO 2020	AÑO 2021	AÑO 2022	AÑO 2023
<b>ADMINISTRACIONES PÚBLICAS</b>				
Generalidad de Cataluña	55,55%	53,99%	50,17%	49,20%
Diputación de Barcelona	0,11%	0,10%	0,09%	0,05%
Consejo Comarcal de Osona	0,71%	0,70%	0,56%	0,52%
Ayuntamientos de Osona	0,65%	0,84%	0,63%	0,53%
Estado	0,57%	0,14%	0,38%	0,24%
<b>PROPIOS</b>				
Cuotas usuarios	2,35%	2,68%	2,31%	2,13%
Copagos área residencial y de vivienda	2,16%	1,17%	0,76%	0,98%
Cuotas actividades	0,35%	0,51%	0,62%	0,79%
Facturación servicios empresariales	32,18%	34,94%	41,27%	41,84%
Ingresos varios	1,26%	3,24%	1,37%	2,22%
<b>PRIVADOS</b>				
Cuotas de socios	0,46%	0,40%	0,32%	0,27%
Donativos de empresas y entidades	3,53%	1,25%	1,44%	1,17%
Donativos de particulares	0,11%	0,03%	0,07%	0,06%

## EXPENDITURE

Salaries and Social sec ● Operating expenses ● Depreciations ● Other ●



## SPONSORS





santtomàs

COLLABORATE



Offer an employment contract to a person with a disability



Hire our services



Buy our products



Make a donation



Become a member



Become a volunteer

FOLLOW US ON:



[www.santtomàs.cat](http://www.santtomàs.cat)

[info@santtomàs.cat](mailto:info@santtomàs.cat)

T. 93 885 44 82

C. Sot dels Pradals, 7 · 08500 Vic